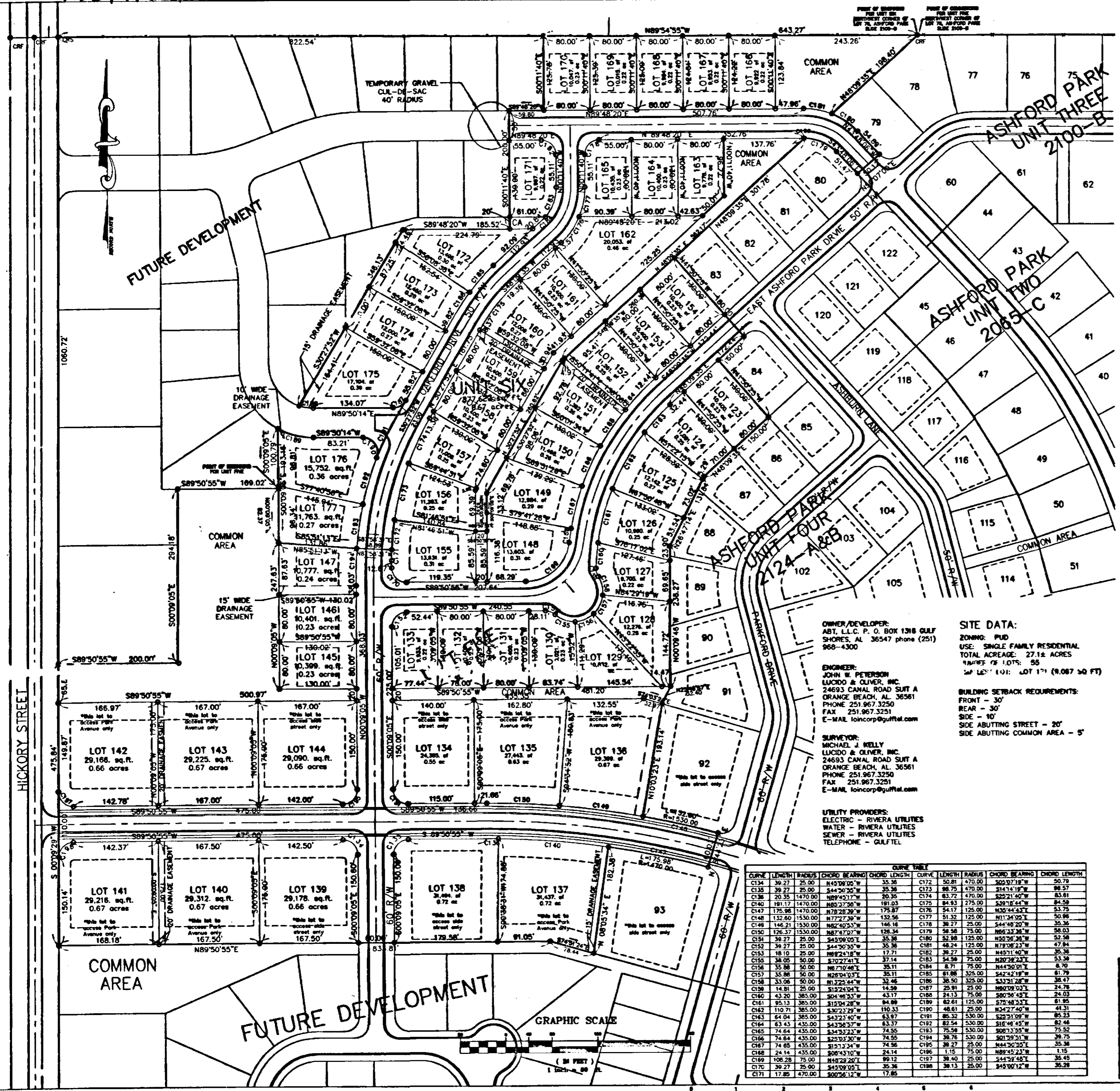


2229-A

Slide 2229A



OWNER/DEVELOPER:
ABT, L.L.C. P. O. BOX 1308 GULF
SHORES, AL 36547 phone (251)
968-4300
ENGINEER:
JOHN W. PETERSON
LUCIDO & OLIVER, INC.
24053 CANAL ROAD SUIT A
GRANDE BEACH, AL 36561
PHONE 251.967.3250
FAX 251.967.3251
E-MAIL: joncorp@att.net

SITE DATA:
ZONING: PUD
USE: SINGLE FAMILY RESIDENTIAL
TOTAL ACRES: 27.14 ACRES
NUMBER OF LOTS: 55
SAP LOT 101: LOT 171 (9.087 SQ FT)

Table with columns: CURVE, LENGTH, RADIUS, CHORD BEARING, CHORD LENGTH, CURVE, LENGTH, RADIUS, CHORD BEARING, CHORD LENGTH. Lists curve data for various points on the site.

State of Alabama, Baldwin County
I certify this instrument as 1110
and taxes collected on
2008 August 20 11:28AM
Submitted By: Lucido Oliver
Book: 2008 101
Page: 5
Notary:
Notary T. John, Judge of Probate

STATE OF ALABAMA
COUNTY OF BALDWIN
I HEREBY CERTIFY THAT THE SUBDIVISION PLAN FOR ASHFORD PARK UNIT SIX
HAS BEEN FOUND TO COMPLY WITH THE SUBDIVISION REGULATIONS OF THE CITY
OF FOLEY, ALABAMA, WITH THE EXCEPTION OF SUCH VARIANCES, IF ANY, AS ARE
NOTED IN THE MINUTES OF THE PLANNING COMMISSION AND THAT IT HAS BEEN
APPROVED AND RECORDED IN THE OFFICE OF THE PROBATE JUDGE OF BALDWIN
COUNTY, ALABAMA, DATED THIS _____ DAY OF _____, 2008.
Notary:
Notary T. John, Judge of Probate

DESCRIPTION UNIT SIX:
BEGINNING AT THE NORTHWEST CORNER OF LOT 76, ASHFORD PARK, AS RECORDED
ON SLICE 2008-B IN THE PROBATE COURT RECORDS OF BALDWIN COUNTY,
ALABAMA, THENCE RUN N89°54'55"W A DISTANCE OF 643.27 FEET TO A POINT;
THENCE RUN S00°17'40"E A DISTANCE OF 125.78 FEET TO A POINT; THENCE
RUN S04°42'00"W A DISTANCE OF 29.8 FEET TO A POINT; THENCE RUN S00°17'40"E
A DISTANCE OF 20.00 FEET; THENCE RUN N89°48'20"W A DISTANCE OF 188.82
FEET; THENCE RUN S07°27'20"W A DISTANCE OF 348.13 FEET TO THE POINT OF
CURVATURE OF A CURVE TO THE LEFT HAVING A RADIUS OF 75 FEET; THENCE
ALONG SAID CURVE A DISTANCE OF 24.13 FEET TO THE POINT OF TANGENCY OF
SAID CURVE; THENCE RUN N89°50'14"E A DISTANCE OF 134.67 FEET TO THE POINT
OF CURVATURE OF A CURVE TO THE LEFT HAVING A RADIUS OF 25.00 FEET;
THENCE ALONG SAID CURVE A DISTANCE OF 25.00 FEET TO THE POINT OF
TANGENCY OF SAID CURVE; THENCE RUN S30°27'20"W A DISTANCE OF 23.80 FEET
TO THE POINT OF CURVATURE OF A CURVE TO THE LEFT HAVING A RADIUS OF
34.00 FEET; THENCE ALONG SAID CURVE A DISTANCE OF 80.30 FEET TO THE POINT
OF TANGENCY OF SAID CURVE TO THE POINT OF CURVATURE OF A CURVE TO THE
LEFT HAVING A RADIUS OF 25.00 FEET; THENCE ALONG SAID CURVE A DISTANCE OF
48.81 FEET TO THE POINT OF TANGENCY OF SAID CURVE; THENCE RUN S09°50'14"E
A DISTANCE OF 63.71 FEET TO THE POINT OF CURVATURE OF A CURVE TO THE RIGHT
HAVING A RADIUS OF 125.00 FEET; THENCE ALONG SAID CURVE A DISTANCE OF
52.81 FEET TO THE POINT OF TANGENCY OF SAID CURVE; THENCE RUN S09°50'14"E
A DISTANCE OF 193.16 FEET TO A POINT; THENCE RUN S05°51'13"E A DISTANCE OF
126.00 FEET TO A POINT; THENCE RUN S07°50'14"E A DISTANCE OF 36.89 FEET
TO THE POINT OF CURVATURE OF A CURVE TO THE RIGHT HAVING A RADIUS OF
47.00 FEET; THENCE ALONG SAID CURVE A DISTANCE OF 30.81 FEET TO THE POINT
OF TANGENCY OF SAID CURVE; THENCE RUN S07°50'14"E A DISTANCE OF 148.84 FEET
TO A POINT; THENCE RUN N09°50'55"E A DISTANCE OF 20.0 FEET; THENCE RUN
N09°50'55"E A DISTANCE OF 63.82 FEET TO A POINT; THENCE RUN N02°27'52"E
A DISTANCE OF 10.00 FEET TO THE POINT OF CURVATURE OF A CURVE TO THE RIGHT
HAVING A RADIUS OF 75 FEET; THENCE ALONG SAID CURVE A DISTANCE OF 75 FEET
TO THE POINT OF TANGENCY OF SAID CURVE; THENCE RUN S47°40'00"E A DISTANCE OF
51.67 FEET TO A POINT; THENCE RUN S07°50'14"E A DISTANCE OF 164.82 FEET TO A POINT;
THENCE RUN N07°50'14"E A DISTANCE OF 125.00 FEET TO A POINT; THENCE RUN
N07°50'14"E A DISTANCE OF 54.80 FEET TO THE POINT OF CURVATURE OF A CURVE TO
THE LEFT HAVING A RADIUS OF 125.00 FEET; THENCE ALONG SAID CURVE A DISTANCE
OF 20.00 FEET TO THE POINT OF TANGENCY OF SAID CURVE; THENCE RUN N49°09'35"E
106.40 FEET TO THE POINT OF BEGINNING OF UNIT 6.

STATE OF ALABAMA
COUNTY OF BALDWIN
I HEREBY APPROVE THE WITHIN PLAT FOR THE RECORDING OF SAME IN THE PROBATE OFFICE OF BALDWIN
COUNTY, ALABAMA, THIS _____ DAY OF _____, 2008.
Notary:
Notary T. John, Judge of Probate

STATE OF ALABAMA
COUNTY OF BALDWIN
I HEREBY APPROVE THE WITHIN PLAT FOR THE RECORDING OF SAME IN THE PROBATE OFFICE OF BALDWIN
COUNTY, ALABAMA, THIS _____ DAY OF _____, 2008.
Notary:
Notary T. John, Judge of Probate

STATE OF ALABAMA
COUNTY OF BALDWIN
I HEREBY APPROVE THE WITHIN PLAT FOR THE RECORDING OF SAME IN THE PROBATE OFFICE OF BALDWIN
COUNTY, ALABAMA, THIS _____ DAY OF _____, 2008.
Notary:
Notary T. John, Judge of Probate

STATE OF ALABAMA
COUNTY OF BALDWIN
I HEREBY APPROVE THE WITHIN PLAT FOR THE RECORDING OF SAME IN THE PROBATE OFFICE OF BALDWIN
COUNTY, ALABAMA, THIS _____ DAY OF _____, 2008.
Notary:
Notary T. John, Judge of Probate

STATE OF ALABAMA
COUNTY OF BALDWIN
I HEREBY APPROVE THE WITHIN PLAT FOR THE RECORDING OF SAME IN THE PROBATE OFFICE OF BALDWIN
COUNTY, ALABAMA, THIS _____ DAY OF _____, 2008.
Notary:
Notary T. John, Judge of Probate

STATE OF ALABAMA
COUNTY OF BALDWIN
I HEREBY APPROVE THE WITHIN PLAT FOR THE RECORDING OF SAME IN THE PROBATE OFFICE OF BALDWIN
COUNTY, ALABAMA, THIS _____ DAY OF _____, 2008.
Notary:
Notary T. John, Judge of Probate

STATE OF ALABAMA
COUNTY OF BALDWIN
I HEREBY APPROVE THE WITHIN PLAT FOR THE RECORDING OF SAME IN THE PROBATE OFFICE OF BALDWIN
COUNTY, ALABAMA, THIS _____ DAY OF _____, 2008.
Notary:
Notary T. John, Judge of Probate

STATE OF ALABAMA
COUNTY OF BALDWIN
I HEREBY APPROVE THE WITHIN PLAT FOR THE RECORDING OF SAME IN THE PROBATE OFFICE OF BALDWIN
COUNTY, ALABAMA, THIS _____ DAY OF _____, 2008.
Notary:
Notary T. John, Judge of Probate

STATE OF ALABAMA
COUNTY OF BALDWIN
I HEREBY APPROVE THE WITHIN PLAT FOR THE RECORDING OF SAME IN THE PROBATE OFFICE OF BALDWIN
COUNTY, ALABAMA, THIS _____ DAY OF _____, 2008.
Notary:
Notary T. John, Judge of Probate

STATE OF ALABAMA
COUNTY OF BALDWIN
I HEREBY APPROVE THE WITHIN PLAT FOR THE RECORDING OF SAME IN THE PROBATE OFFICE OF BALDWIN
COUNTY, ALABAMA, THIS _____ DAY OF _____, 2008.
Notary:
Notary T. John, Judge of Probate

FINAL PLAT UNIT 6
ASHFORD PARK ABT, L.L.C.
Lucido & Oliver Inc.
2008-088 Date: 11-22-04