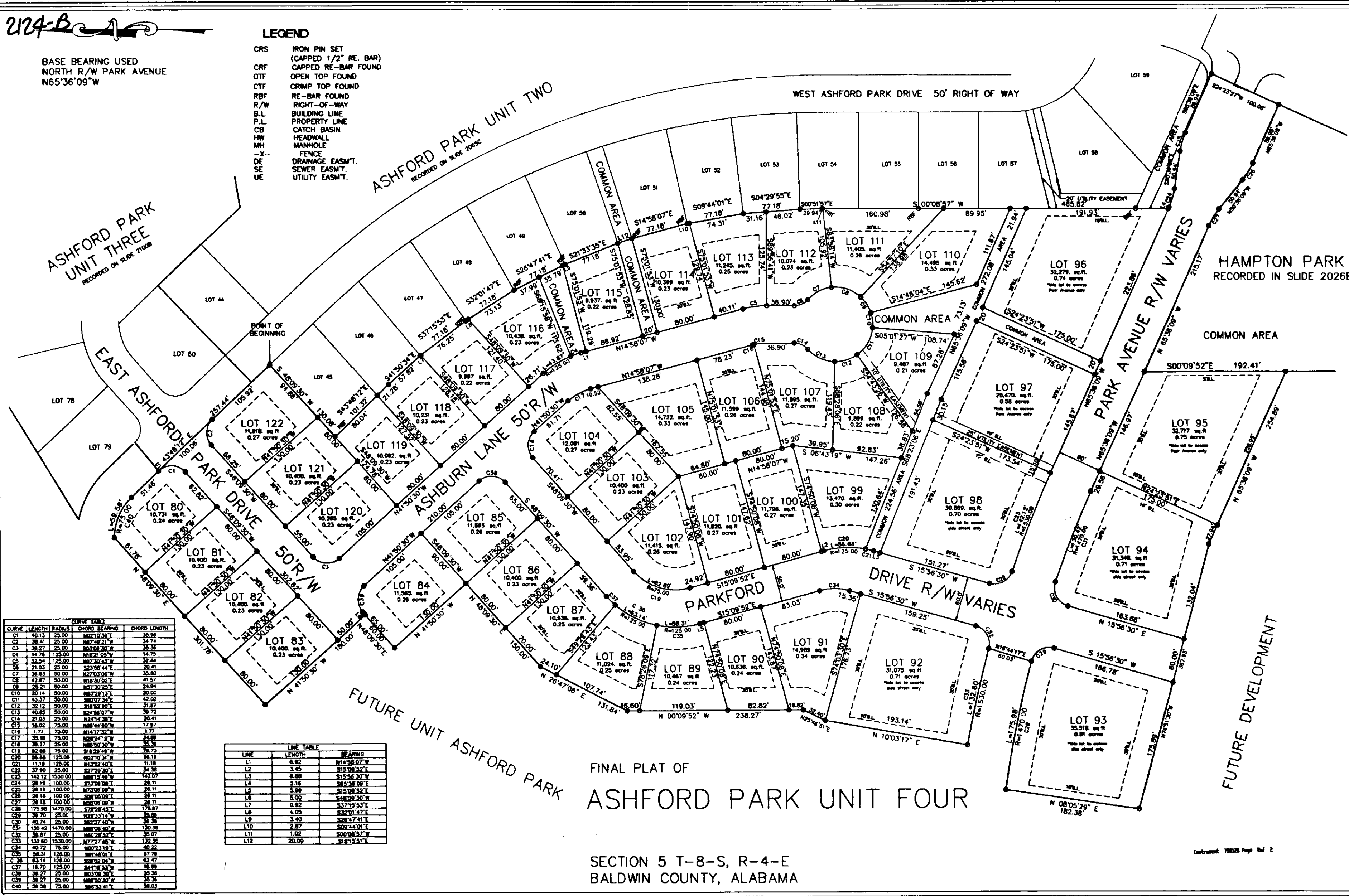


2124-B

BASE BEARING USED  
NORTH R/W PARK AVENUE  
N65°36'09"W

LEGEND

- CRS IRON PIN SET
- CRF (CAPPED 1/2" RE. BAR)
- OTF CAPPED RE-BAR FOUND
- CTF OPEN TOP FOUND
- CTP CRIMP TOP FOUND
- RFB RE-BAR FOUND
- R/W RIGHT-OF-WAY
- B.L. BUILDING LINE
- P.L. PROPERTY LINE
- CB CATCH BASIN
- MW HEADWALL
- MH MANHOLE
- X- FENCE
- DE DRAINAGE EASMT.
- SE SEWER EASMT.
- UE UTILITY EASMT.



FINAL PLAT OF  
ASHFORD PARK UNIT FOUR

SECTION 5 T-8-S, R-4-E  
BALDWIN COUNTY, ALABAMA

CURVE	LENGTH	RADIUS	CHORD BEARING	CHORD LENGTH
C1	60.13	25.00	N00°00'00"E	60.13
C2	28.41	25.00	N87°49'21"W	54.74
C3	58.27	25.00	S04°29'55"E	55.36
C4	14.78	125.00	N18°22'05"W	14.75
C5	32.54	125.00	N07°52'43"W	32.44
C6	21.03	25.00	S23°26'44"E	20.41
C7	38.83	50.00	N12°03'08"W	38.82
C8	42.87	50.00	N12°03'08"W	41.57
C9	25.21	50.00	N37°30'25"E	24.84
C10	20.14	50.00	N63°29'14"E	20.00
C11	43.37	50.00	N07°07'24"E	42.02
C12	32.12	50.00	S18°32'20"E	31.37
C13	40.85	50.00	S22°54'07"W	39.72
C14	21.63	25.00	N14°13'36"E	20.41
C15	18.02	75.00	N08°44'00"W	17.87
C16	1.77	75.00	N14°17'32"W	1.77
C17	28.18	75.00	N18°22'05"W	24.88
C18	88.27	25.00	N88°50'30"W	85.38
C19	82.89	75.00	S18°29'48"W	78.73
C20	84.88	125.00	N07°07'25"W	84.18
C21	11.19	125.00	N12°22'40"E	11.18
C22	37.90	25.00	S27°29'30"E	34.38
C23	142.12	150.00	N07°07'25"W	142.07
C24	28.18	100.00	N07°07'25"W	28.11
C25	28.18	100.00	N07°07'25"W	28.11
C26	28.18	100.00	N07°07'25"W	28.11
C27	28.18	100.00	N07°07'25"W	28.11
C28	175.88	1470.00	S28°28'43"E	175.87
C29	30.70	25.00	N07°07'25"W	30.68
C30	40.74	25.00	N07°07'25"W	38.38
C31	130.42	1470.00	N07°07'25"W	130.38
C32	38.87	25.00	N07°07'25"W	38.07
C33	132.60	1530.00	N12°22'40"E	132.56
C34	40.72	75.00	N07°07'25"W	40.42
C35	38.31	125.00	N07°07'25"W	37.79
C36	83.14	125.00	N07°07'25"W	82.37
C37	18.70	125.00	N07°07'25"W	18.69
C38	38.27	25.00	N07°07'25"W	38.26
C39	38.27	25.00	N07°07'25"W	38.26
C40	38.27	25.00	N07°07'25"W	38.26

LINE	LENGTH	BEARING
L1	6.92	N14°58'07"W
L2	3.45	S15°08'52"E
L3	6.89	S15°08'52"E
L4	2.18	S85°30'09"E
L5	5.98	S15°08'52"E
L6	5.00	S48°08'30"W
L7	0.92	S37°15'43"E
L8	4.05	S32°01'47"E
L9	3.40	S28°57'41"E
L10	2.87	S02°44'01"E
L11	1.02	S02°08'57"W
L12	20.00	S18°19'21"E

**SURVEY CONCEPTS, INC.**  
PROFESSIONAL LAND SURVEYORS  
3817 GULF SHORES PARKWAY #B GULF SHORES, AL 36542  
251-962-2724 FAX 251-962-1840  
E-MAIL: SURVEYCONCEPTS@GULFTEL.COM

FILE: 13577  
DWG. BY: OEK  
CHKD. BY: TD  
DATE: JUNE 24, 2003  
SCALE: 1"=80'